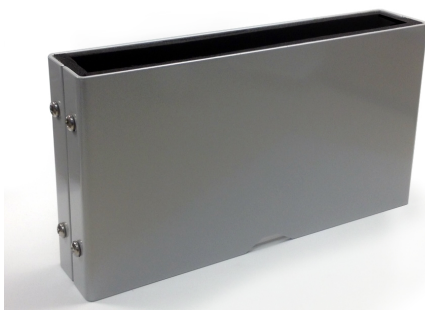




**STC926**  
**BUMPER GUARD, G2 PLEXI**

*NEW*

Heavy duty powder coated steel covers installed over the G1/G2 Plexi pedestal covers to protect it from damage by shopping and flat bed carts. Made from 1/8" (3.175 mm) galvanized steel. Kit includes a base bracket, two covers and all necessary installation hardware.



**STC927**  
**BUMPER GUARD, G2 AD PANEL**

*NEW*

Heavy duty base covers installed over the G1/G2 Plexi pedestal covers to protect it from damage by shopping carts. Kit includes a base bracket, two covers and all necessary installation hardware.



**STC929**  
**BUMPER GUARD, 36" TALL, STAINLESS STEEL, REV. A**

*NEW*

Heavy duty formed stainless steel flange mounted guard used to protect SenTech door antenna, or other pedestal type systems from damage from shopping carts.

Includes installation kit.



**STC930**  
**BUMPER POST, 36" TALL, BLACK, WITH CAMERA, REV. A**

*NEW*

Heavy duty steel flange mounted post with covert high resolution 2 MP IPCamera. The Axis P1245 IP camera provides excellent views directly in the exit path allowing facial recognition. The post also provides protection of SenTech or other pedestal type systems from damage due to shopping carts, strollers etc. Post includes, camera, USB interconnect cable, POE adapter and mounting hardware. • Requires CAT5 cable run to POE network switch or NVR - not included.



**0500-0088**

*NEW*

**BUMPER POST, STAINLESS, 1.90" DIAMETER X 30" TALL**

Heavy duty stainless steel flange mounted post used to protect SenTech or other pedestal type systems from damage from shopping carts.



**STC925**

*NEW*

**UNIVERSAL BUMPER RISER**

Heavy duty base installed under a pedestal antenna to protect it from damage by shopping carts. Kit includes all necessary installation hardware.